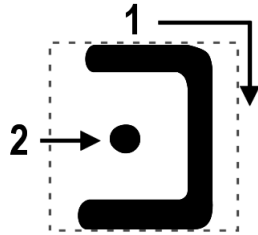


Kaf Writing Practice

“k” as in kite
no dot – hard “ch” as in bach



Handwriting practice lines for the Hebrew letter Kaf. Each line consists of a top blue dotted line, a middle blue dotted line, and a bottom blue dotted line. A vertical pink line is on the right side of the page.

Row 1: Six hollow Kaf letters. The first is without a dot. The next four have a dot. The sixth is a solid black Kaf with a dot.

Row 2: Three hollow Kaf letters. The first is without a dot. The next two have a dot.

Row 3: Two hollow Kaf letters. The first is without a dot. The second has a dot.

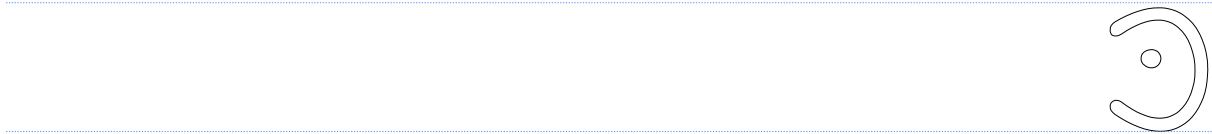
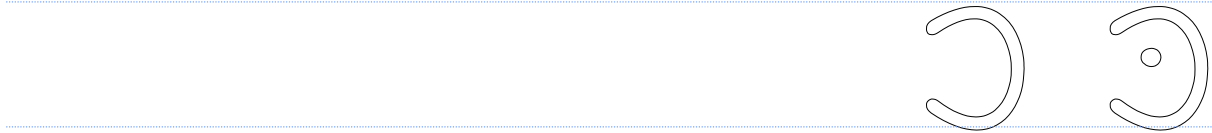
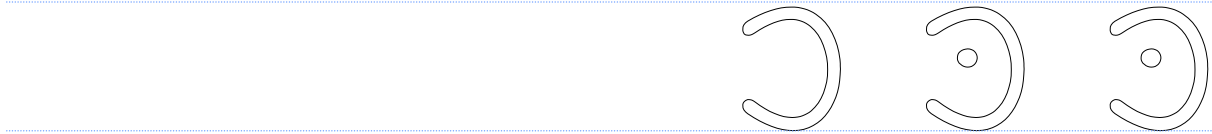
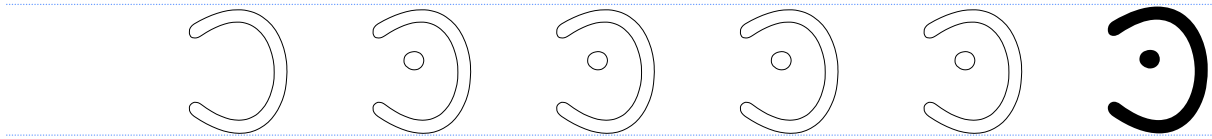
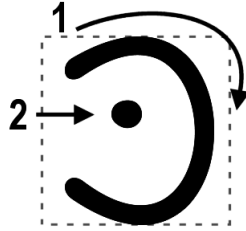
Row 4: One hollow Kaf letter with a dot.

Row 5: Empty.

Row 6: Empty.

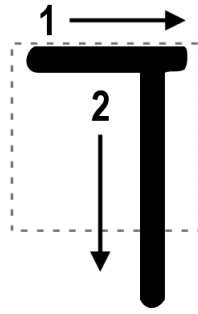
Kaf Writing Practice

“k” as in kite
no dot – hard “ch” as in bach



Final Khaf Writing Practice

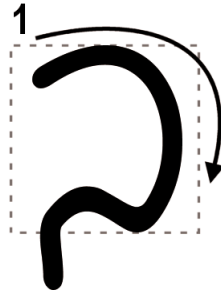
“ch” as in bach



Handwriting practice lines for the final Khaf letter. The page features four rows of horizontal lines. The first row contains four hollow outlines of the letter followed by one solid black outline. The second row contains three hollow outlines. The third row contains two hollow outlines. The fourth row contains one hollow outline. A vertical pink line is positioned on the right side of the page.

Final Khaf Writing Practice

“ch” as in bach



Handwriting practice lines for the final Khaf letter. The page features four rows of horizontal lines. The first row contains five letters: four hollow outlines for tracing and one solid black letter. The second row contains three hollow outlines. The third row contains two hollow outlines. The fourth row contains one hollow outline. A vertical pink line is positioned on the right side of the page.